

CREE Buildings

THE FUTURE OF BUILDING.



E

Family-owned and operated businesses with more than **230 years** of experience combined.



Hubert Rhomberg, Founder and CEO of CREE Buildings and Antonio Carlos Rodrigues, CEO of Grupo Casais and Shareholder.





CREE Buildings is an
international
construction collective
for regenerative building
solutions.

A Growing Global Presence

Canada
UBC Properties Trust

United States
Walbridge

Canada
Serotiny Group,
Well Grounded
Real Estate

Luxembourg
CDCL

Belgium
Wood Shapers (CFE)

Denmark
CREE Denmark

Czech Republic
Syner

Germany
CREE Deutschland,
Zech Group, Brüninghoff,
Cecon-Buildings, Rhomberg Bau

Austria
Rhomberg Bau

Switzerland
Losinger Marazzi

Portugal
Grupo Casais

Spain
ACR Group

France
High-Six

Italy
Rubner Holzbau

Japan
Asahi Kasei
Homes

Singapore
Kimly
Construction



Our

Motivation

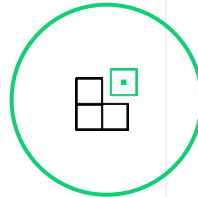


CREE Way



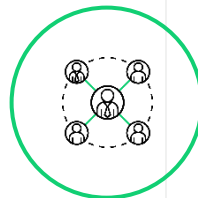
Sustainable Timber/Hybrid Buildings

- Ecological footprint with wood as focus component saving resources
- Health, well-being, hygiene, & safety
- Life cycle perspective and flexible floor space for changeability



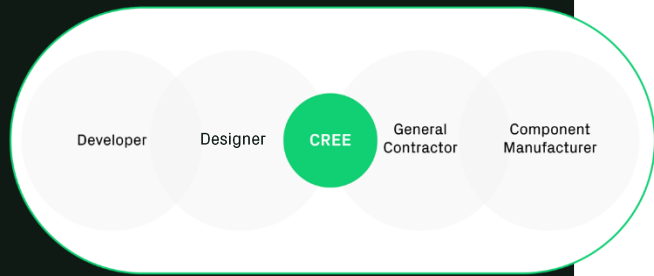
Efficient Modular Pre-Fabrication

- "Construction as a service" workflow → fast, reliable, & repeatable results
- Off-site modular pre-fabrication
- Digital twins and BIM



Scalable Network / Platform

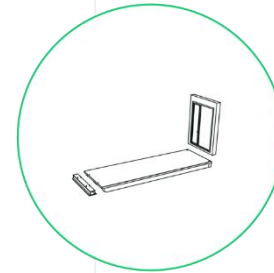
- Marketplace for pre-approved components, products and services
- User-driven collaborative network that collects and shares best practices
- Efficient communication tool



Early design stage



Digital twin



Manufacturing of CREE components and on-site preparation



Delivery and assembly

Early engagement of CREE and early involvement of **all stakeholders**, leads to real efficiency.

CREE Process

“We meet the project team **early**
We **shape** the design together”

CREE

System

Refined timber-hybrid system
for prefabricated building
construction.





Lifecycle Tower (LCT)

- Timber-based construction method
- Industrialized off-site production + on-site assembly
- 2 hours fire resistance rating
- Multi-story and large volume building
- Most energy and resource efficient
- Minimized CO₂ emissions
- Approx. 220.000 m² completed
- Approx. 100.000 m² under construction



PAVUS, a.s.
AUTHORIZED BODY 216
NOTIFIED BODY 1381
Accredited certification body for
product certification No. 3041

Registered office:
Prosecká 412/74, 190 00 Praha 9 – Prosek
Phone: 238 019 567 Fax: 238 019 560
E-mail: mail@pavus.cz, http://www.pavus.cz

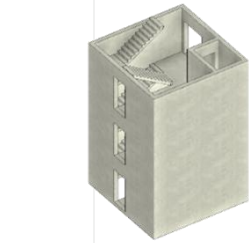
Branch: FIRE TESTING LABORATORY
VESELÍ NAD LUŽNICÍ
Štáf J. Hřbela 879
Veselí nad Lužnicí
381 81

Phone: 381 477 418
Fax: 381 477 419
E-mail: vesel@pavus.cz

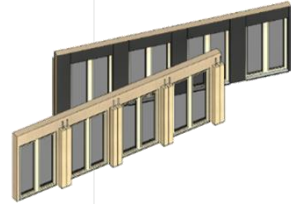
FIRE RESISTANCE CLASSIFICATION REPORT



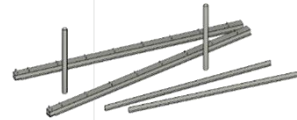
4 Key Elements



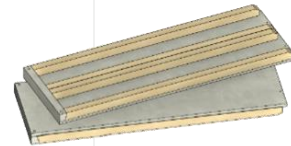
1 Bracing System / Core



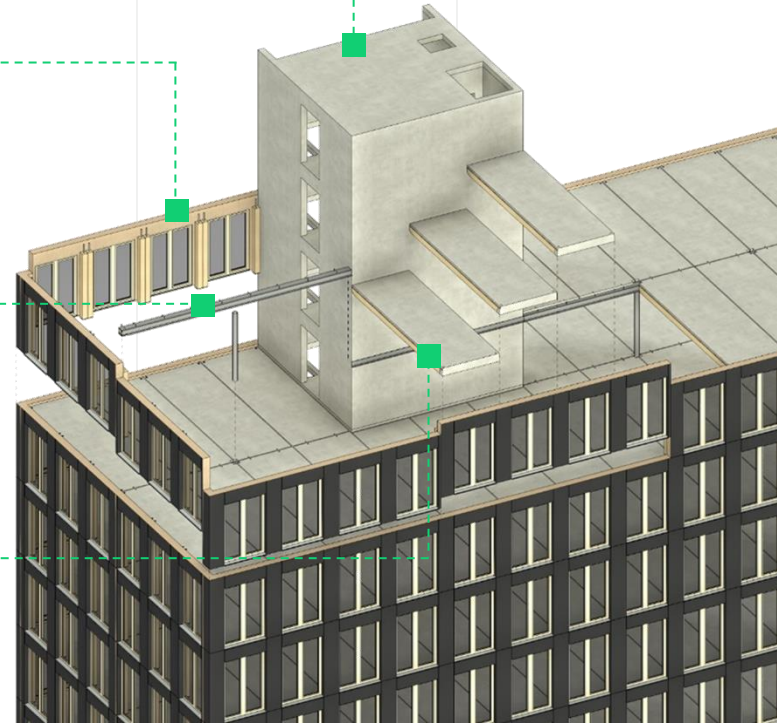
2 Glulam Columns & Wall Elements



3 Middle Girders & Columns



4 Timber-Concrete Composite Slabs



Exterior Wall Elements



Timber-Concrete Composite Panel





DAY 1







Michael Kamenik

michael.kamenik@creebuildings.com

+43 664 831 49 52

THANK YOU.

**Let's shape
future together.**

